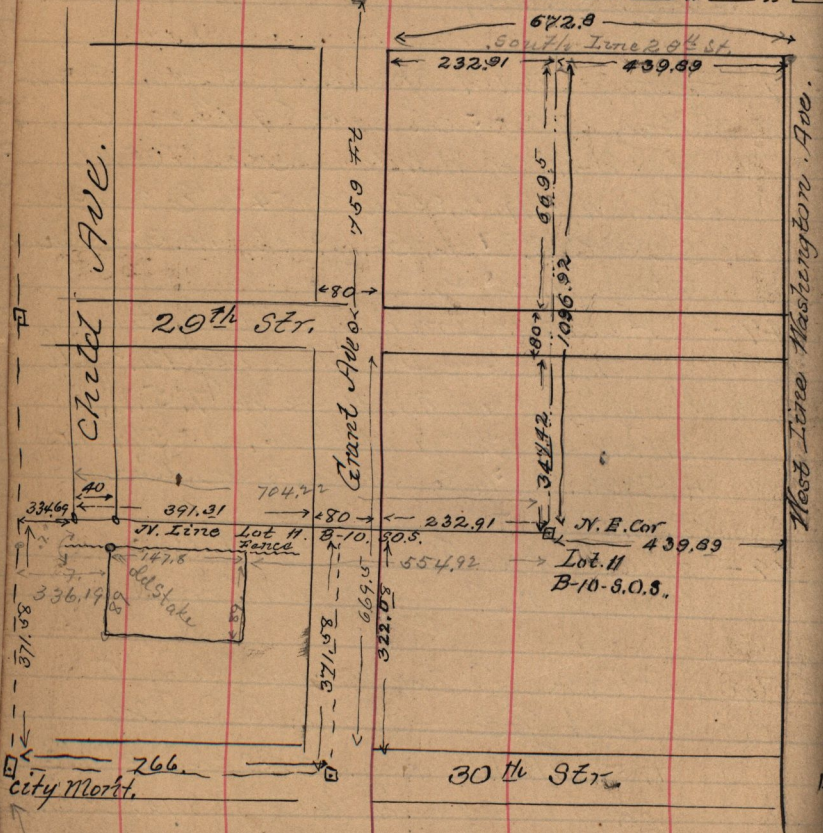


S 1 3/4" W. 5. ch, S 85 1/4" E 4.50 ch
 N 1 3/4" E 5. ch to leg, 2.20 a.

- JAN. 3 - 1898 -
 Survey of part of Lot 11, B-10, South Ogden Survey
 For Richard Ballantine



N.W 93.6 ft to cedar post.
 S.W 88.6 Boxed post.

fees \$ 2.50 to apply on acct.

Description issued: Pt Lot 11, B-10-S.O.S.

Reg. 8, 1000 Jns. W. Proj 7 ft. S. of N.E. Cor, Lot 11. W. 147.8 ft S. 89.7 ft. 147.8 ft N 89.7 ft to leg.